



  
MADE IN ITALY



**TECHNOLOGY  
FOR FASTER  
RECOVERY**





**TECHNOLOGY  
FOR FASTER  
RECOVERY**

## ○ ○ ○ WHAT IS DVINCI

dVinci is a state-of-the-art Tecar device that significantly reduces healing, rehabilitation and recovery time from traumatic events and post-surgery.

Our technology stimulates the activation of natural reparative, anti-inflammatory and analgesic processes by acting on the deep biological tissues in a natural and non-invasive way, stimulating the process from within. It increases blood flow in the circulatory system, improving oxygenation and eliminating toxins.

Treatments are carried out in both chronic and acute phases, with a rapid effect on pain, and can also be performed in the presence of metal prostheses.

The results are immediate, and the effectiveness is proven by numerous case studies with our devices.

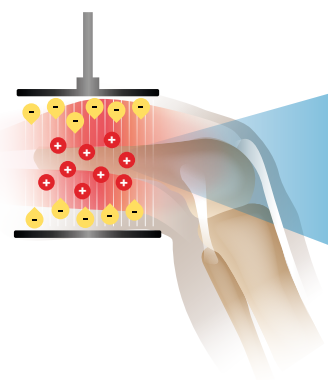
**Our dVinci devices are entirely manufactured in Italy and are CE certified.**



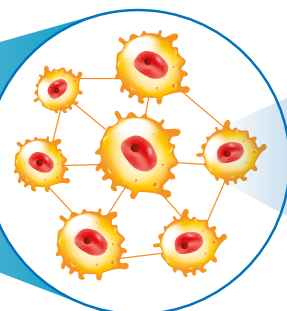
# WHAT IS DIATHERMY

**Diathermy means the use of high frequency electromagnetic fields applied to the body's tissues with the aim of inducing various therapeutic effects.**

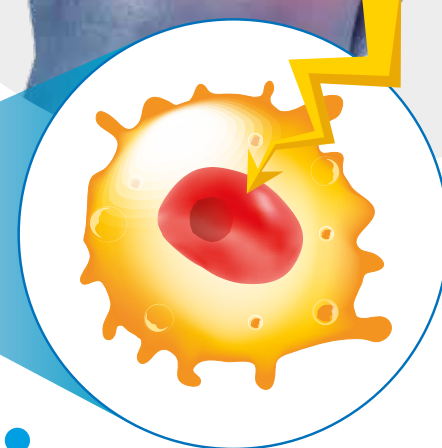
Our diathermy device generates alternate current on the patient's body with frequencies ranging from 0.8 MHz to 1.2 MHz with the use of a pair of electrodes. Thanks to the alternate current, you do not encounter the problems that would be using direct current such as sunburn or electrolysis. There are also no effects of low-frequency alternate current: the excitomotor nervous response that occurs, for example, with the use of electro-stimulators.



Effects at tissue level: the increase in temperature generates an increase in local blood flow, which increases the supply of oxygen and nutrients, as well as speeding up the outflow of waste substances.



Effects at extracellular matrix level: thanks to the energy injected and the consequent vibration of the ions, the extracellular matrix is re-settled and therefore the damaged tissues heal more quickly.



Effects at cell level: there is a transfer of energy to the cell with transformation of ADP into ATP. More damaged cells will receive more energy because they have a smaller potential difference than healthy cells.

# WHEN TO USE

You can successfully use dVinci in both chronic and acute phases of pain, with a rapid effect on it, and can be also performed in the presence of metal prostheses. It is mainly used in post-surgical rehabilitation and in sports traumatology, but it has many different areas of application.

dVinci is useful for treating:

- ✓ **Muscle and tendon disorders**
- ✓ **Contusive or distorting traumas**
- ✓ **Herniated discs**
- ✓ **Pathologies of the spinal column and peripheral joints**
- ✓ **Pathologies of the vascular and lymphatic systems**
- ✓ **Pathologies of the nervous system of orthopaedic origin.**
- ✓ **And other aesthetic medicine treatments**



# ○ ○ ○ CASE STUDIES

1

**MEDIAL CALF INJURY** The patient was treated with dVinci by using the manual resistive electrode, 15 minutes low power at 1 Mhz frequency, than further 15 minutes with manual capacitive electrode. Twice a week sessions of 30 minutes each. *Here below the ultrasound scan and its reports.*



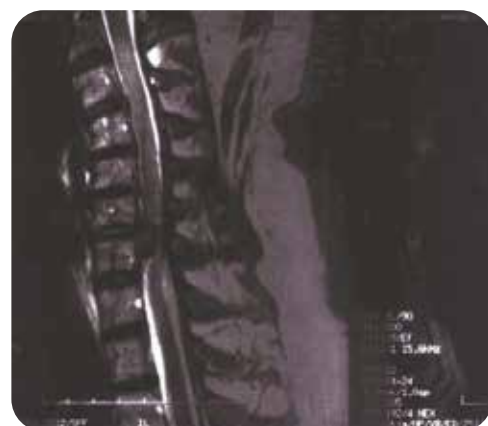
**ULTRA SOUND SCAN OF TENDON 04-02-2010** The ultra sound scan of the right medial calf, painful area, shows a small ipoechoic area next to the muscle, extended for about 8 mm, in the inside part, possibly due to a local muscle injury. Further it is possible to see a slight ipoechoic area placed in the lower area of the muscle, close to the muscular band, possibly fluid blood.



**ULTRA SOUND SCAN OF TENDON 03-04-2010** Still there is a small ipoechoic area of the left medial calf, about 2 mm large, showing also a consolidation of the fibres, with no valuable.

2

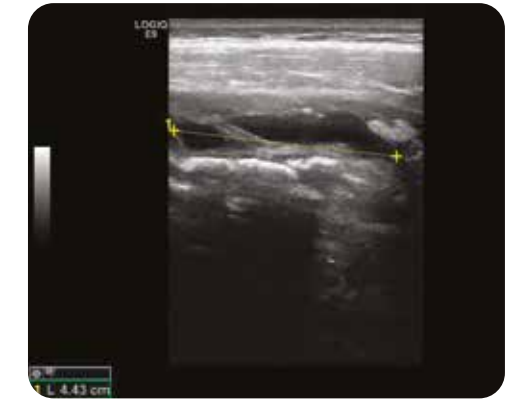
**DISCUS HERNIA** The MRI show the effect got after one month of treatments, total twelve sessions, by using working protocols with automatic capacitive plates and the resistive electrode, at 1Mhz frequency.



3

## CONTUSIVE FEMUR TRAUMA

Ultrasound scans represent the situation at the time of trauma and after four IMC sessions with automatic active plate. The sessions, with a bi-weekly frequency for a duration of 30 minutes each, were carried out only and exclusively with the automatic capacitive electrodes with a frequency of 1 Mhz. OPERATING MODE: Active plate on the site of injury, neutral of availability. Temperature perceived by the patient: pleasant plate in opposition, power 25% warmth throughout the session.



1

**PSORIASIS AND LYMPHEDEMA** The pictures show the effect got after 30 sessions of 30 minutes each, by using the capacitive manual electrode at a frequency of 1 Mhz, medium power on the limbs and the automatic plate on the liver, simultaneously.

It was necessary to make 2 sessions per week and, every 2 weeks, It was make a drainage session with dVinci of 30 minutes each, by using the active plate under the foot and the relative passive plate on renal area, at the maximum power tolerated by the patient who has to feel a pleasant heat.

BEFORE



AFTER



## SCIENTIFIC RESEARCH ON DIATHERMY

Samuel Ribeiro, Bebiana Henriques, Ricardo Cardoso. **The Effectiveness of Tecar Therapy in Musculoskeletal Disorders.** International Journal of Public Health and Health Systems. Vol. 3, No. 5, 2018, pp. 77-83.

A. Terranova, G. Vermiglio, S. Arena, A. Cicciò, S. Di Dio, M. Vermiglio [Scuola di Specializzazione in Medicina Fisica e Riabilitazione, Università degli Studi di Messina, Messina]. **Tecarterapia nel trattamento post-chirurgico delle fratture di femore.** Europa MedicoPhysica, 2008; 44 (Suppl. 1 to No. 3) G. Melegati, D. Tornese, M. Bandi [Dipartimento di Terapia Fisica e Riabilitazione (Capo Dipartimento Dott. Felicianantonio Di Domenica) Istituto Ortopedico Gaetano Pini, Milano]. **L'impiego della Tecarterapia nei Traumi Distorsivi di Caviglia.** La riabilitazione 33, 2000, PP. 163-167.

V. Gasbarro, C. Medini, A. Cataldi, R. Soverini, P. Teutonico [Unità Operativa di Chirurgia Vascolare, Arcispedale S. Anna Ferrara]. **Tecarterapia nei Linfedemi degli arti: Indicazioni, Prime Applicazioni Cliniche e Risultati.**

# ○ ○ ○ INNOVATIVE FEATURES

## TWO CHANNELS

Gives the therapist the ability to operate on two areas of the body at the same time, or even on two different patients, using the two channels both in automatic and manual mode.



## ROLL ON

Our patented ergonomic handpiece allows you to assist the diathermy with the effect of the drug in the treatment of all muscle and joint injuries. In fact, thanks to our handpiece, the active principle penetrates deeper and faster in order to obtain faster and more lasting results.



## AUTOMATIC

Let our device take care of your patient! With this working mode, thanks to the automatic plates, you can support your work with the handpiece or you can treat large parts of the body in complete autonomy without the need for the presence of the operator.



## BIPOLAR

Without the need to use a passive plate, the operator will use only the handpiece to treat superficial lesions with ease, especially on areas of the body that are difficult to reach with other types of electrodes.





# 3 VERSIONS TO CHOOSE FROM



Our technology significantly reduces healing, rehabilitation and recovery times from traumatic and post-operative events. dVinci ONE stimulates the activation of the natural repairing, anti-inflammatory and analgesic processes by acting on the deep biological tissues in a natural and non-invasive way, stimulating the process from within. The results are immediate and the effectiveness is demonstrated by the numerous case studies carried out with our devices.

With dVinci ONE you can choose between 3 frequency protocols, 2 working modes (capacitive and resistive). The innovative design meets ergonomics and ease of use thanks to the use of a large 10" capacitive touchscreen panel, with controls designed for the therapist.



dVinci ONE PLUS includes all the features of dVinci ONE and in addition provides the therapist with a full optional device. Thanks to the greater number of accessories, all the innovative features of our devices are available, such as the possibility of carrying out automatic treatments and the use of the roll on handpiece.

Technical Specifications	
Selectable frequencies	0.8 MHz, 1 MHz, 1.2 MHz
Voltage	110-230 V a.c. +/- 10%
Maximum input power	450W
Output voltage of each channel (V rms)	320V
Output power of each channel (Watt rms)	150W
Electrical Hazard Class	1
Warranty	4 years warranty on machine body
Dimensions	35cm (w) x 35cm (l) x 24cm (h)
Weight	ca. 7Kg



dVinci TWO PLUS represents the state of the art of devices that produce diathermy in the field of physiotherapy. It has two channels and can exploit all the features and accessories available in order to guarantee the possibility of treating a vast number of traumas and pathologies, as well as representing an extremely useful garrison for sports rehabilitation. All the therapeutic possibilities of the device will be immediately available to the operator thanks to this full optional dual channel machine.

ONE	ONE PLUS	TWO PLUS	
✓	✓	✓	Capacitive electrodes No. 3
✓	✓	✓	Resistive electrodes No. 3
✓	✓	✓	Capacitive electrode holder
✓	✓	✓	Resistive electrode holder
	✓	✓	Bipolar handheld S
✓	✓	✓x2	Passive plate
	✓	✓x2	Active Plate
	✓	✓	Capacitive roll-on electrode M
	✓	✓	Resistive roll-on electrode M

# ○ ○ ○ APPLIED PARTS

The wide range of accessories that complement our dVinci devices is designed to allow the operator to carry out several different treatments according to their needs.

Our Cart has been specially designed for the dVinci equipment and its accessories. It is equipped with electrode holders, plate holders and cream holders so that you can comfortably transport the entire device and have everything at your disposal during treatments.

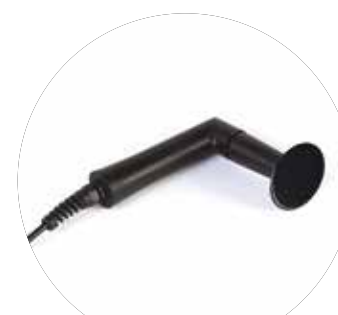
**All accessories and the Cart are designed and manufactured in Italy.**



# ○ ○ ○ APPLIED PARTS



Resistive electrode holder



Capacitive electrode holder



Passive plate



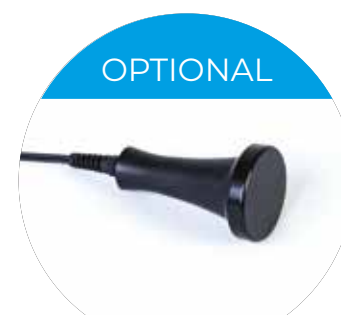
Active plate



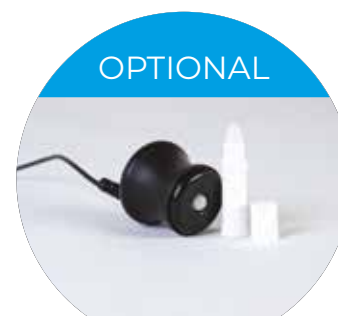
Bipolar plate



Bipolar handheld S



Bipolar handheld L



Capacitive roll-on handheld S



Capacitive roll-on handheld M



Capacitive roll-on handheld L



Resistive roll-on handheld S



Resistive roll-on handheld M



Resistive roll-on handheld L

## COMPANY

**White Medical & Beauty** have been working in the field of physiotherapy for over 15 years.

We are a young and dynamic company that ensures the **quality of the products** and services it offers, uses technologies synergistically, invests in research and development and experiments in the field thanks to the technical know-how in possession.

One of the first companies in Italy to produce specific devices for diathermy, our production plants guarantee the **highest made in Italy of quality** both for the electronic components and for the chassis and handpieces, always with a special attention to the operator safety.

**Customers are an added value** for us and we take into account the specific needs of each, managing to ensure **customized solutions** for every need. Thanks to the flexibility of our product line and thanks to the commitment we put into training, we bring the customer to understand and make the best use of our devices.

Our company operates not only in the field of **Physiotherapy, but also in Veterinary and Aesthetic Medicine** with devices designed for the specific characteristics of the sector.

## NOTES

## SKILLS



**Effectiveness of the devices, supported by scientific studies**



**Constant research and development, our cornerstone**



**Continuous training on our machines, fundamental for a correct and effective use**



**Completely Made in Italy**





Via Aldo Moro 12  
40066, Pieve di Cento (BO) - Italy  
+39 051 0517170

[www.whitemb.com/en](http://www.whitemb.com/en)  
[export@whitemb.com](mailto:export@whitemb.com)

